

PRAKTIKUM APLIKASI WEB

DAY 3

(Cascading Style Sheet)

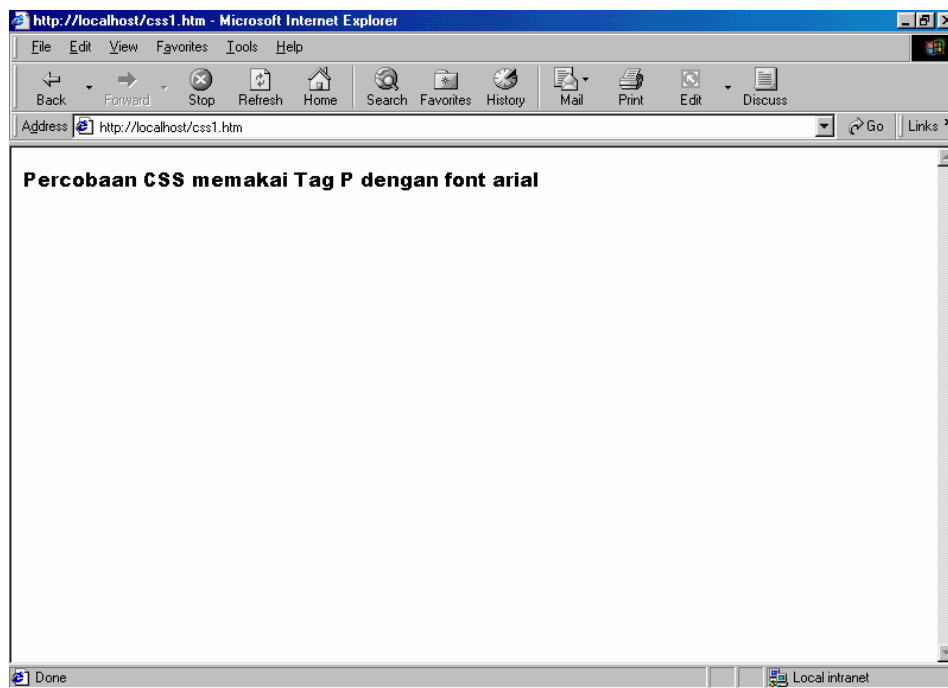
Cascading Style Sheet

Percobaan 1.

Source : css1.htm (CSS internal)

```
<html>
<head>
<style>
<!--
p          { font-family: Arial Black }
-->
</style>
</head>
<body>
<p>Percobaan CSS memakai Tag P dengan font arial</p>
</body>
</html>
```

Hasil :

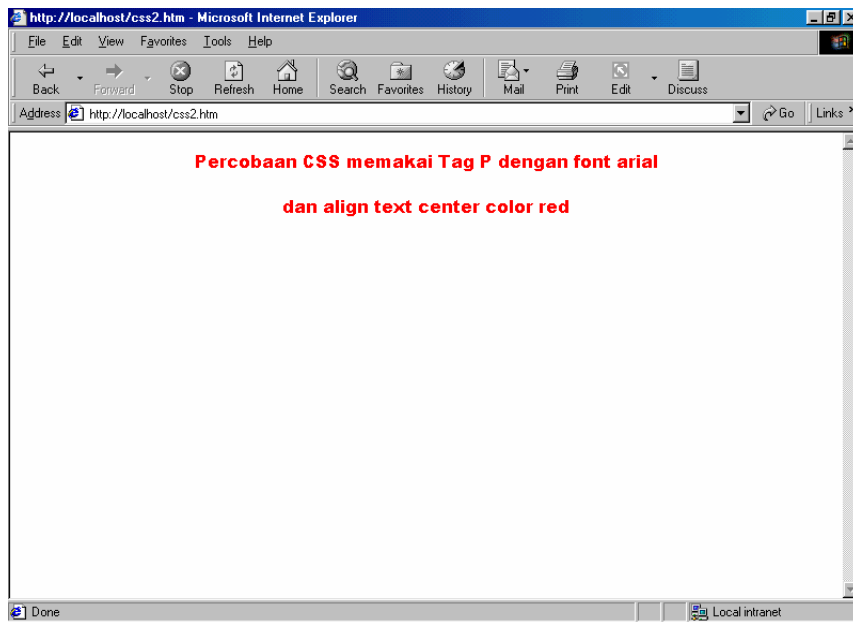


Percobaan 2. (CSS internal)

Source css2.htm :

```
<html>
<head>
<style>
<!--
p { font-family: Arial Black; text-align: Center; color: red }
-->
</style>
</head>
<body>
<p>Percobaan CSS memakai Tag P dengan font arial</p>
<p>dan align text center color red</p>
</body>
</html>
```

Hasil :

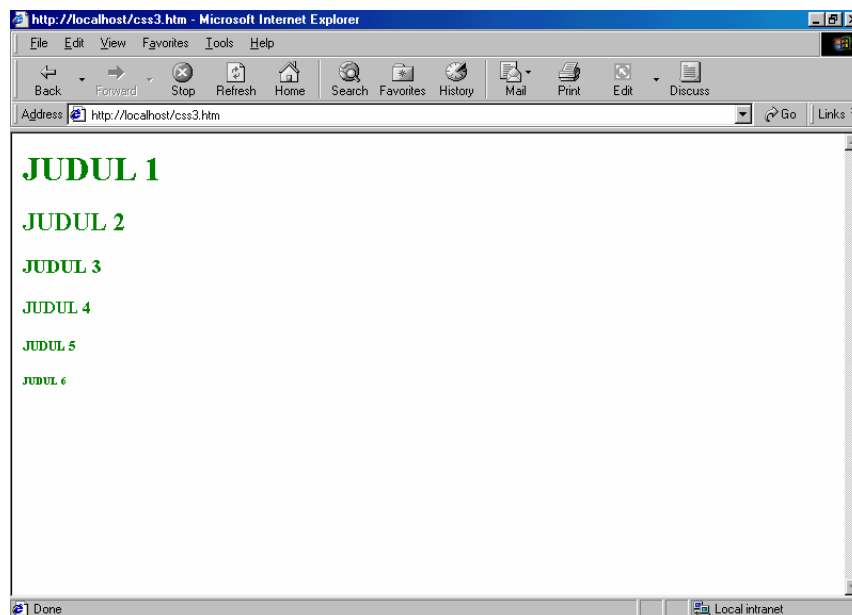


Percobaan 3. (CSS Internal Berkelompok)

Source css3.htm :

```
<html>
<head>
<style>
<!--
h1, h2, h3, h4, h5, h6 { color: green }
-->
</style>
</head>
<body>
<h1>JUDUL 1</h1>
<h2>JUDUL 2</h2>
<h3>JUDUL 3</h3>
<h4>JUDUL 4</h4>
<h5>JUDUL 5</h5>
<h6>JUDUL 6</h6>
</body>
</html>
```

Hasil :

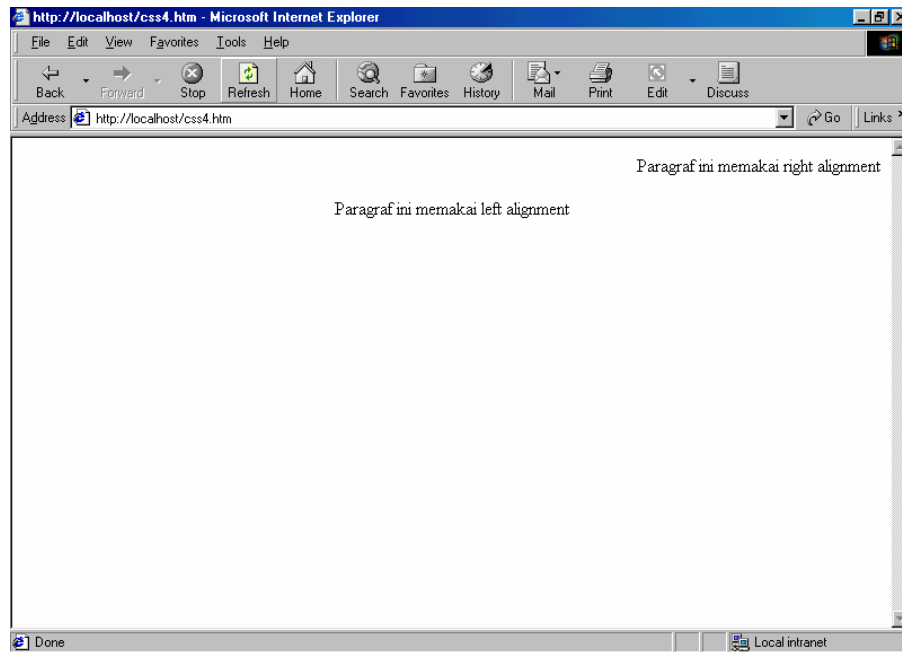


Percobaan 4. (CSS Internal dengan Class)

Source css4.htm :

```
<html>
<head>
<style>
<!--
p.kanan { text-align: Right }
p.kiri { text-align: Center }
-->
</style>
</head>
<body>
<p class=kanan>Paragraf ini memakai right alignment</p>
<p class=kiri>Paragraf ini memakai left alignment</p>
</body>
</html>
```

Hasil :

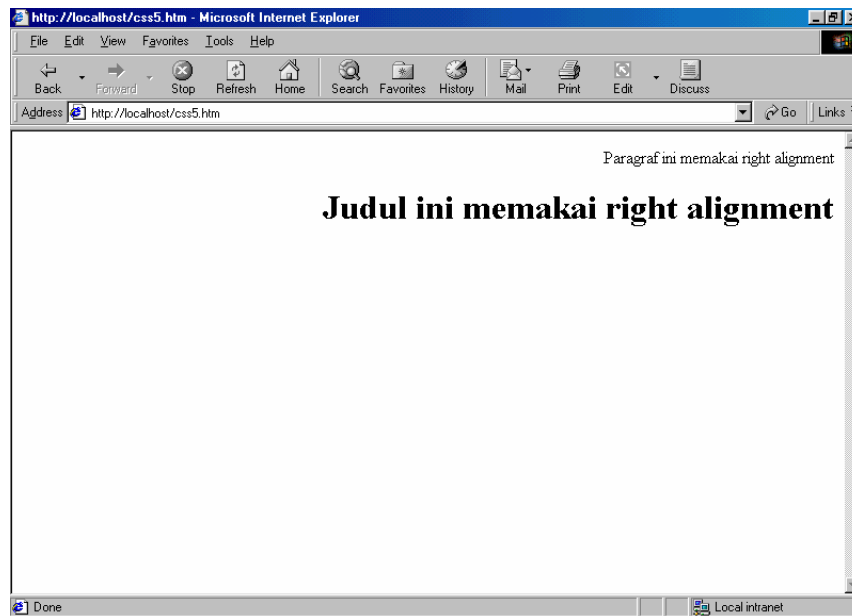


Percobaan 5. (CSS Internal Menggunakan id)

Source css5.htm :

```
<html>
<head>
<style>
<!--
#kanan { text-align: Right }
-->
</style>
</head>
<body>
<p id=kanan>Paragraf ini memakai right alignment</p>
<h1 id=kanan>Judul ini memakai right alignment</h1>
</body>
</html>
```

Hasil :



Percobaan 6. (CSS External)

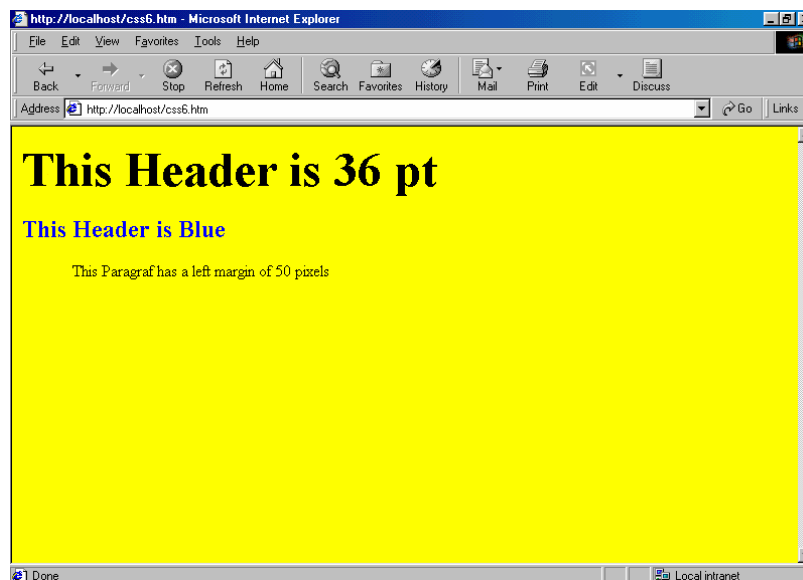
Source Ex1.css :

```
body {background-color: yellow}
h1 {font-size: 36pt}
h2 {color: blue}
p {margin-left: 50px}
```

Source css6.htm :

```
<html>
<head>
<link rel="stylesheet" type="text/css" href="Ex1.css">
</head>
<body>
<h1>This Header is 36 pt</h1>
<h2>This Header is Blue</h2>
<p>This Paragraf has a left margin of 50 pixels</p>
</body>
</html>
```

Hasil :



Percobaan 7. (CSS External)

Source Ex2.css :

```
body {background-color: tan}
H1 {color: marron; font-size: 20pt}
HR {color: navy}
p {font size: 11 pt; margin-left: 15px}
A:Link {color: green}
A:Visited {color: yellow}
A:Active {color: blue}
A:Hover {color: black}
```

Source css7.htm :

```
<html>
<head>
<link rel="stylesheet" type="text/css" href="Ex2.css">
</head>
<body>
<h1>This Header 1</h1>
<h2>This Header is Blue</h2>
<p>This Paragraf has a left margin of 15 pixels and font size 11 pt</p>
<p><a href="http://www.yahoo.com">This is a link</a></p>
</body>
</html>
```

Hasil :

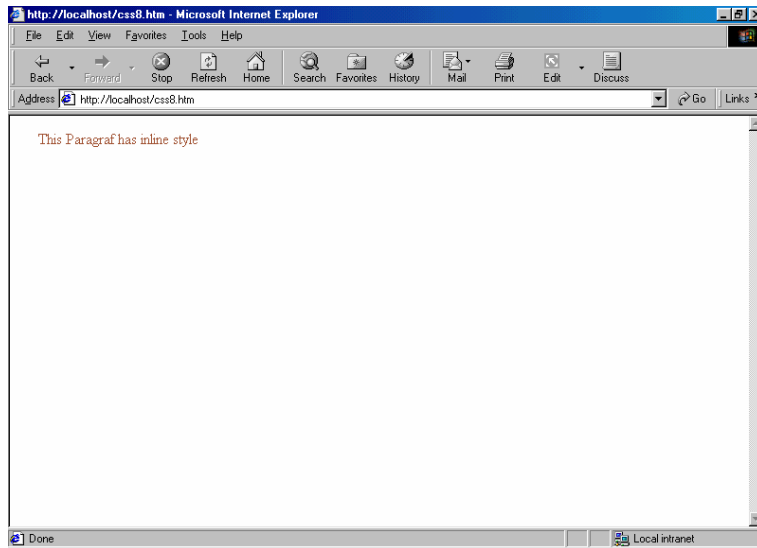


Percobaan 8. (CSS Inline)

Source css8.htm :

```
<html>
<head>
</head>
<body>
<p style="color: sienna; margin-left: 20px">This Paragraf has inline
style</p>
</body>
</html>
```

Hasil :



Percobaan 9. (CSS Multi Style Sheet)

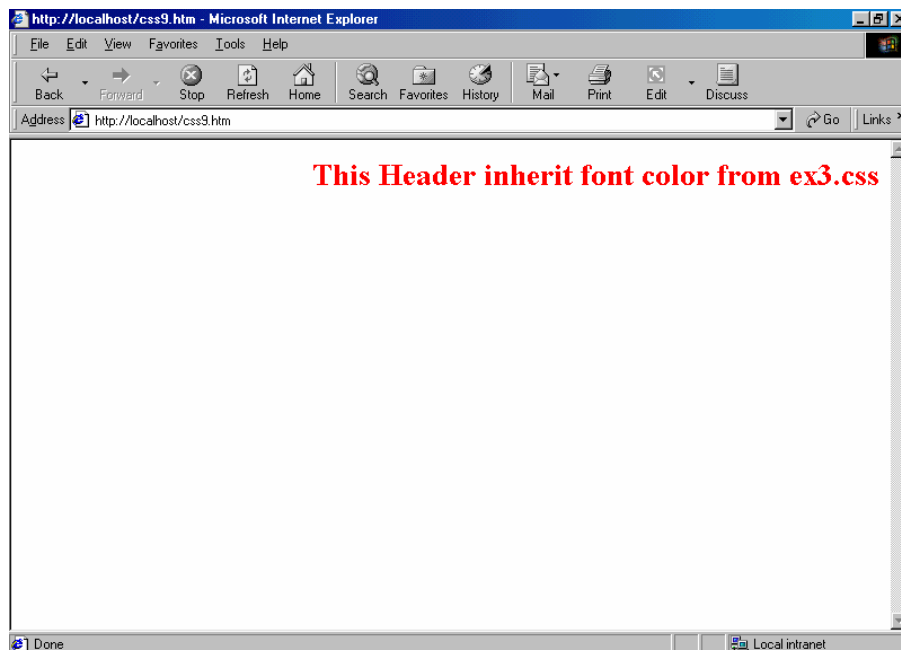
Source Ex3.css :

```
H3 {color : red; text-align: left; font-size: 8 pt}
```

Source css9.htm :

```
<html>
<head>
<link rel="stylesheet" type="text/css" href="Ex3.css">
<style>
<!--
H3 { text-align: Right; font-size: 20 pt }
-->
</style>
</head>
<body>
<H3>This Header inherit font color from ex3.css</H3>
</body>
</html>
```

Hasil :



Soal Latihan Dikumpulkan minggu depan :

Tuliskan source code html dengan menggunakan css (gunakan cara2x seperti yang telah diajarkan) sehingga tampil pada halaman web seperti pada tampilan berikut ini :

